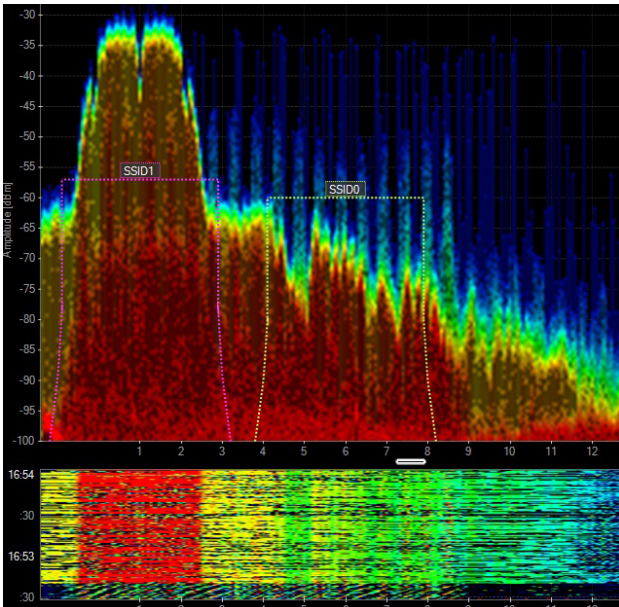


# Pain Relief for Wi-Fi Headaches



Chanalyzer is designed to bring simplicity and power to the process of wireless troubleshooting. It combines Wi-Spy’s ability to read raw RF data with your computer’s built-in Wi-Fi card to show you how environmental Wi-Fi saturation and non-Wi-Fi transmitters are affecting your network. Chanalyzer is capable of displaying activity in the 2.4 GHz band, 5 GHz band, or both simultaneously if using Wi-Spy DBx or a Cisco access Point.

## With Chanalyzer you can:

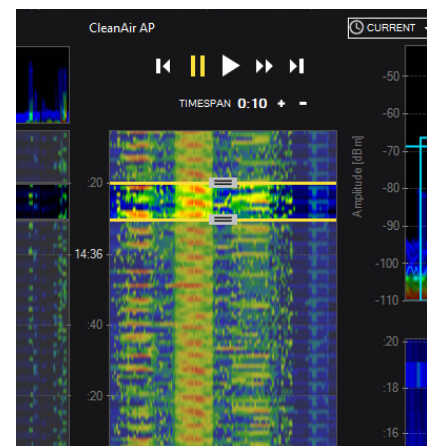
- Find the clearest channel for your networks to optimize WLAN connectivity and throughput
- Locate & defeat interfering transmitters that are harming your network
- Prove and document RF issues and your solutions, with customized, colorful reports (Report Builder accessory)
- Troubleshoot remotely with data from Cisco access points (Cisco CleanAir accessory)

## Understand Utilization by Color

A variety of devices transmit in the same part of the wireless spectrum as Wi-Fi, including microwave ovens, cordless phones, security cameras, and more. With Chanalyzer, you can visualize just how active these transmitters are, based on the Density View’s colors: blue for infrequent transmissions, to red for constant activity.

## DVR-Like Playback Controls

Similar to a television’s DVR, you can pause or rewind your data while Chanalyzer continues to record in the background. When reviewing a recording, Chanalyzer’s Waterfall Navigation allows you to go directly to the time with the highest utilization, or any other point of interest during the survey. Every graph and table in Chanalyzer adjusts itself to display only information from the selected time span in the Waterfall Navigation Pane.



## What you get in Chanalyzer:

- Visualization of raw spectrum data
- Wi-Fi network overlays
- Visual playback with Waterfall Navigation
- Find offending devices
- Session recording and saving
- Automatic device classification
- Option to add specialized accessories
- Add notes by location

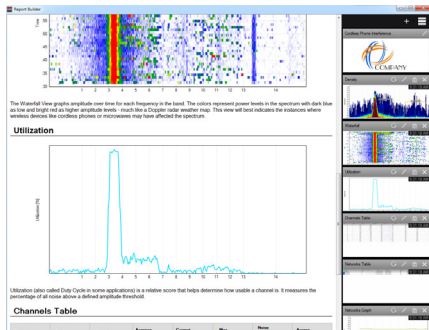


# Complete your toolkit with these optional accessories

## Report Builder (accessory)

Report Builder is a fast, simple way to explain and document RF interference and congestion issues. With just one click, you can add a snapshot, edit image size, create descriptions or use preloaded explanations.

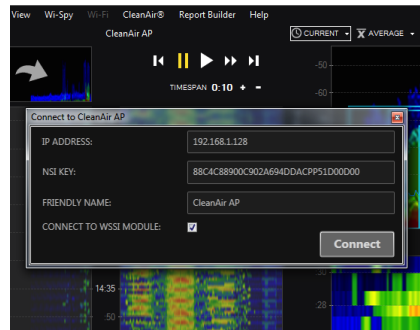
- Document spectrum events to explain to your audience, even if they're not tech-savvy
- Build comparisons to highlight impact from interference
- Export directly to PDF, HTML, RTF, or copy to clipboard



## Cisco CleanAir® (accessory)

Cisco CleanAir allows you to remotely visualize both 2.4 and 5 GHz wireless environments simultaneously from your WSSI Modules or access points in Local, Monitor, or SE-Connect modes.

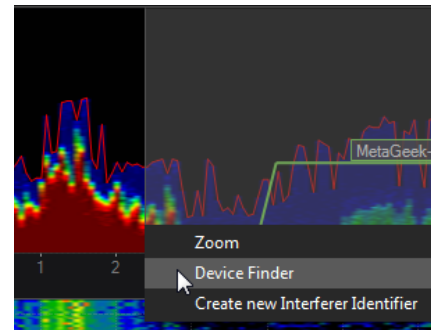
- Troubleshoot from your desk
- Monitor your Air Quality Index and see identified interferers that impact your network.
- Visualize both the 2.4 and 5 GHz bands simultaneously from your CleanAir AP



## Device Finder (accessory)

Defend your WLAN airspace with Device Finder, a purpose-built directional antenna for Wi-Spy that quickly tracks down transmitting devices in the 2.4 GHz spectrum.

- Bring laser-like focus to your search for offending signals
- Visualize the device's location as you approach the signal
- Positively identify and mitigate hidden interference



## MetaCare Assurance Plan

The MetaCare Assurance Plan entitles you to obtain and legally install future software updates for MetaGeek software during the period the plan is in effect. Updates range from bug fixes and minor feature updates to major enhancements and all the other wonderful changes we have in store.

For more information about MetaCare Assurance Plan, visit [www.metageek.net/metacare](http://www.metageek.net/metacare)

## Technical Requirements

OPERATING SYSTEM: Microsoft® Windows 8, 7, Vista, or XP (SP3)

Mac OS X VIRTUALIZATION: VMware Fusion, Parallels

MINIMUM REQUIREMENTS: 1024 x 600, 4 GB RAM, .NET 3.5, 1 USB port

WI-FI RADIO: 802.11n/ac recommended

NOTE: Virtual machines require a USB Wi-Fi adapter to view Wi-Fi information

### Cisco CleanAir Mode (remote troubleshooting)

REQUIRED HARDWARE: Cisco CleanAir-Enabled Access Point (Aironet 1552, 2600, 3500, 3600, and 370)

### MetaGeek Wi-Spy Mode

REQUIRED HARDWARE: Wi-Spy, Built-In Wi-Fi card (802.11ac recommended, a/b/g/n compatible), Wi-Spy (DBx, 2.4x)

OPTIONAL HARDWARE: Device Finder 2.4 GHz Direction

